



BIA101 | BIVA[®] P R O

Stop making assumptions
JUST MEASURE



BIA101 | BIVA[®]

P R O

Innovation,
reliability,
ergonomic design



INNOVATIVE

BIA 101 BIVA[®] PRO is equipped with the IPS, 5" capacitive display which guarantees maximum graphic rendering and viewing from all angles. The touch screen is optimized in its responsiveness and the graphical user interface, consisting exclusively of icons, increases the ease of use and allows immediate access to the operational functions.



RELIABLE

The **SIGNAL QUALITY INDEX (SQI)** function allows the user to dynamically assess the quality of the electrical signal during measurement, based on five parameters related to the signal itself, namely: stability, variability, oscillation, drift, and motion. SQI is visualized on the screen by means of 6 stars, and the user, together with the patient's objective examination, evaluates whether the signal quality is acceptable in order to confirm, or not, the measurement.



PERFORMING

The battery features increased capacity, providing up to 5 hours of continuous use and ensuring greater device versatility. The **BIA 101 BIVA[®] PRO** includes a database capable of storing up to 150 analyses, with a battery charge that supports up to 200 measurements.



SCALABLE

BIA 101 BIVA[®] PRO combines two measurement configurations: **TOTAL BIA** for full body analysis using standard tetrapolar technique & **REGIONAL BIA** for the assessment of single anatomical regions.



ERGONOMIC

The proprietary ergonomic case of the **BIA 101 BIVA[®] PRO** is designed to seamlessly adapt to any operational setting, ensuring maximum user comfort. Compact, lightweight, and made from durable materials, it protects the device in all conditions - making it ideal for both clinical environments and fieldwork.



SAFE

BIA 101 BIVA[®] PRO is a **Class IIA CE Medical Device**, tested for safe measurements on children, pregnant women and patients carrying implantable medical devices or prostheses.

OPTIMIZED GRAPHICS PERFORMANCE

The display with In-Plane Switching (IPS) technology, allows a viewing angle of 180°, ensuring optimized color rendering. The screen is brighter with improved definition, increased responsiveness and overall optimized operational performances.

USER-FRIENDLY INTERFACE

The interactive screen is very user-friendly in all functions, simplifying device use during analysis, data collection and in the internal database management.

BIOELECTRIC DATA QUALITY CHECK

The **Signal Quality Index (SQI)** measures the quality of the electrical signal recorded by the patient cable during BIA measurement, over time. This value is visualized on the screen with a scale, 1 - 6 stars.

The SQI is recorded dynamically (Live Test) and detects all uncontrolled methodological errors that may cause low signal quality, such as subject movement, damaged or non-compliant electrodes, non-ideal environmental conditions or damaged patient cable.



Extremely poor quality



Poor quality



Low quality



Adequate quality



Good quality



Excellent quality

Two different measurement options: TOTAL BIA and REGIONAL BIA

BIA 101 BIVA® PRO is a modular system and was designed to allow both traditional whole-body analysis (**Total BIA**) and individual anatomical region assessments (**Regional BIA**, provided upon request. Specific subscription needed).



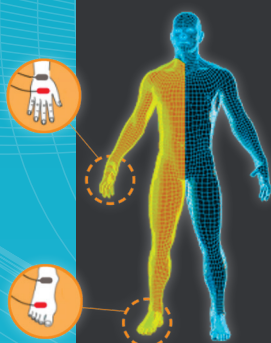
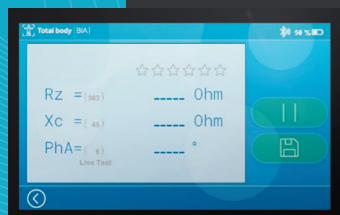
Total body | BIA

TOTAL BODY ANALYSIS

Measures in **real time** R_z , X_c and PhA parameters with standard tetrapolar technique.

APPLICATION FIELDS

- Clinical Nutrition
- Sports and Fitness
- Prevention
- Pediatrics
- Pregnancy

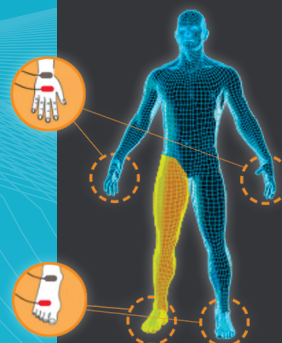
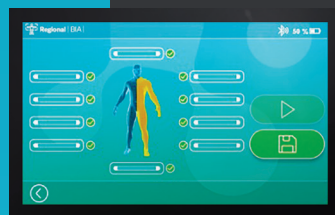


Regional | BIA

REGIONAL ANALYSIS

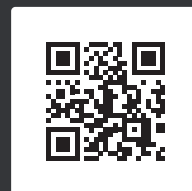
Measures in just 1 minute R_z , X_c and PhA parameters in 10 body regions using the **8-polar procedure**:

- Right arm
- Left arm
- Right trunk
- Left trunk
- Right leg
- Left leg
- Upper body
- Lower body
- Right body
- Left body



APPLICATION FIELDS

- Muscle Asymmetries
- Lymphedema
- Rehab



+ | BODYGRAM® DASHBOARD

**TOTAL BODY BIA WITH BODYGRAM®
DASHBOARD** data analysis software represent the most advanced and complete system for body composition analysis.

Bodygram Dashboard 3.0 is the updated software for more specific and accurate body composition analyses, thanks to the ability to **select the configuration best suited to the subject being examined**.



Certifications



Since 1980, **AKERN** has been developing medical solutions dedicated to body composition analysis. Our quality management system, structured according to **ISO 9001** and **ISO 13485** standards, enables us to continuously improve our processes, products, and services.



BIA101 | BIVA[®]
P R O

**CE Medical Device
CLASS IIA**

BODYGRAM[®]
DASHBOARD

**CE Medical Device
CLASS I**

MODEL PRODUCT	CATALOGUE NO.	DESCRIPTION
BIA 101 BIVA[®] PRO	00BNE	Sensor with a 5" touch screen display, for total body analysis. Supplied with 3 pouches of electrodes and necessary accessories for total body analysis. Includes 1 year license to Bodygram [®]
BODYGRAM[®] DASHBOARD 12 MONTH LICENSE	SWBODYGRAM-12	12 month license subscription to the Bodygram [®] Dashboard analysis software.
REGIONAL ANALYSIS KIT	0DOTBSE-R4 (whit Biatrodes [™]) 0DOTBSE-R2 (whit Bivatrodes [™])	The kit allows regional analysis only with the device BIA 101 BIVA [®] PRO. Supplied with 2 pouches of electrodes and necessary accessories for Regional analysis. Includes also 1 year access to the Regional App directly from the Bodygram [®] Dashboard platform.
REGIONAL APP 12 MONTH LICENSE	SWREG-12	SWREG-12 12 month license subscription to the Regional App accessible through the Bodygram [®] Dashboard analysis software.
BIATRODES[™] ELECTRODES	0ELB100	Disposable single-use low impedance electrode certified for bioimpedance analysis. 1 pouch of electrodes = 100 tabs (25 tests).
BIVATRODES[™] ELECTRODES	0ELBIVA	Disposable single-use low impedance electrode, pre-spaced, certified for bioimpedance analysis, highly repeatable. 1 pouch of electrodes = 36 tabs (18 tests).

Only the use of compliant, single-use **AKERN[®]** electrodes, guarantee the certified performance of all sensors belonging to the BIA 101 line, validated in over 4500 publications since over 45 years.

AKERN S.r.l.

Head office: Via Lisbona, 32/34
50065 Pontassieve (Florence) • Italy

Registered office: Via Campodavola, 1
56122 Pisa • Italy

Ph. +39 055 8315658

EU202504174EN©Akern2025

www.akern.com

