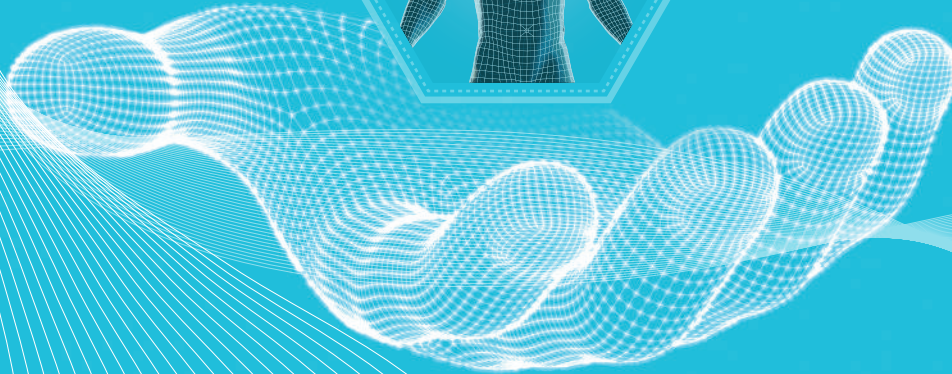


# BODYGRAM® | 3.0

## DASHBOARD

Customize your analysis with  
the Bodygram configurations



# BODYGRAM® | 3.0

## DASHBOARD



Innovation, accuracy, specificity: the scientific and technological progress make Bodygram® the benchmark for body composition assessments.

**BODYGRAM® Dashboard 3.0** is the latest version of software for body composition data analysis and interpretation. Developed to provide accurate, reliable, and clinically relevant results, **BODYGRAM®** incorporates **AKERN®**'s scientific progress and knowledge in body composition.

With **BODYGRAM® Dashboard 3.0** you can finally select the most suitable configuration for each subject measured, optimizing the analysis based on the subject's profile and objectives.



Reliable and clinically relevant results increasingly specific and clear

### NEW USER REPORT:



- ✓ cover page customized with user's logo.
- ✓ easy-to-read for the subject.
- ✓ report can be emailed directly from the **BODYGRAM®** platform.

### FLASH CARDS AND USER UPDATE GUIDE:



- ✓ for an intuitive and immediate use of the software.
- ✓ to make the best use of the platform.



# BODYGRAM® DASHBOARD 3.0:

## choose the configuration for customised results

Each configuration represents a **harmonized set of equations, references and graphs** that consistently describe **the quantitative and qualitative changes in the body composition** of each subject.



## WEIGHT CONTROL CONFIGURATION

Recommended for **adults (>16 years old)** aiming for:

- **weight loss**
- **weight gain**
- **body recomposition**



**WEIGHT CONTROL BIAVECTOR®** created on the bioelectrical data of over 4300 health adults in 2023.

**SET OF EQUATIONS** validated and updated to the current population and aligned to the scientific literature. The new equations of FFM, TBW, ECW, BCM, BMR allow more accurate estimations as they are referred to a healthy population.

**REFERENCE VALUES** updated and calculated on the current (2023) population of healthy adults.



## SPORT & ACTIVITY CONFIGURATION

Recommended for **subjects practicing vigorous and intense sports activity** for at least 8–10 hours per week or with PAL>2. Generally, applies to elite or professional athletes.



**SPORT & ACTIVITY BIAVECTOR®** based on bioelectrical data calculated on athletes practicing different sports.

**SET OF EQUATIONS** validated and calculated for sportspeople. The new equations of FFM, TBW, ECW, LST (a-LST, I-LST), BMR allow more accurate estimations of the athlete.

**REFERENCE VALUES** calculated and validated on general sports populations.

Each configuration includes a colorimetric **representation of the reference values**, which allow to clearly visualize the statistical distribution of the reference population for each body composition parameter.



The Bodygram Standard configuration is also available. It is highly sensitive to even the smallest fluid variations and is recommended for assessing body composition in all situations not specifically covered by the other dedicated configurations.



# Enhanced features



## UNLIMITED ACCESS TO EXAMS ANYWHERE

**BODYGRAM®** is accessible from any type of device and compatible with the most popular OS: MacOS, iOS, Windows, Android on desktop, smartphone or tablet.



## ONLINE AND OFFLINE WORKSPACES

**BODYGRAM®** offers two different workspaces: Online on a dedicated server platform and Offline with Desktop application (for Windows and MacOS).



## AUTOMATIC DATABASE IMPORT

Migration to **BODYGRAM®** platform does not result in data loss. Your database will be imported automatically at you first log-in.



## CE MEDICAL DEVICE

**BODYGRAM®** is CE marked Class I Medical Software.



## PERIODICAL SCIENTIFIC UPDATE

**BODYGRAM®** is constantly up to date to guarantee a professional analysis tool always aligned with the clinical research progress.



## GDPR COMPLIANCE

**BODYGRAM®** patient data management is in accordance with the GDPR (EU regulation 2016/679).



## CUSTOMIZED REPORTS

**BODYGRAM®** includes a tool to create customized reports to address different patient management needs. User can choose elements to populate the report and better guide the patient along his path.



## BACK-UP AND DATA STORAGE

**BODYGRAM®** includes an automatic Cloud based data back-up system and a data recovery function.

## References:

1. Sardinha, Luís B., et al. "Development and validation of BIA prediction equations of upper and lower limb lean soft tissue in athletes." *European Journal of Clinical Nutrition* 74.12 (2020): 1646-1652.
2. Cappellari, Gianluca Gortan, et al. "Sarcopenic obesity in free-living older adults detected by the ESPEN-EASO consensus diagnostic algorithm: validation in an Italian cohort and predictive value of insulin resistance and altered plasma ghrelin profile." *Metabolism* 145 (2023): 155595.
3. Sandini, Marta, et al. "Predicting the Risk of Morbidity by GLIM-Based Nutritional Assessment and Body Composition Analysis in Oncologic Abdominal Surgery in the Context of Enhanced Recovery Programs: The PHase Angle Value in Abdominal Surgery (PHAVAS) Study." *Annals of Surgical Oncology* (2024): 1-10.
4. Van Dessel, Kristof, et al. "Basal metabolic rate using indirect calorimetry among individuals living with overweight or obesity: The accuracy of predictive equations for basal metabolic rate." *Clinical Nutrition ESPEN* 59 (2024): 422-435.
5. Cereda, Emanuele, et al. "Validation of a new prognostic body composition parameter in cancer patients." *Clinical Nutrition* (2020).
6. Sergi, Giuseppe, et al. "Assessing appendicular skeletal muscle mass with bioelectrical impedance analysis in free-living Caucasian older adults." *Clinical nutrition* 34.4 (2015): 667-673.
7. Cruz-Jentoft, Alfonso J., et al. "Sarcopenia: revised European consensus on definition and diagnosis." *Age and ageing* 48.1 (2019): 16-31.
8. Campa, Francesco, et al. "Methods over materials: the need for sport-specific equations to accurately predict fat mass using bioimpedance analysis or anthropometry." *Nutrients* 15.2 (2023): 278.
9. Campa, Francesco, et al. "New bioelectrical impedance vector references and phase angle centile curves in 4,367 adults: The need for an urgent update after 30 years." *Clinical Nutrition* 42.9 (2023): 1749-1758.
10. Lukaski, Henry C., and Jose Manuel Garcia-Almeida. "Phase angle in applications of bioimpedance in health and disease." *Reviews in Endocrine and Metabolic Disorders* 24.3 (2023): 367-370.
11. Sardinha, Luís B., et al. "Development and validation of bioelectrical impedance prediction equations estimating regional lean soft tissue mass in middle-aged adults." *European Journal of Clinical Nutrition* 77.2 (2023): 202-211.

## AKERN S.r.l.

Head office: Via Lisbona, 32/34  
50065 Pontassieve (FI) • Italy

Registered office: Via Campodavola, 1  
56122 Pisa (PI) • Italy

Tel. +39 055 8315658

[www.akern.com](http://www.akern.com)



EU202408158aEN©Akern2024

